



*Serving Mobile Homeowners, Nationwide*

---

# Rough Opening Measurement Guide

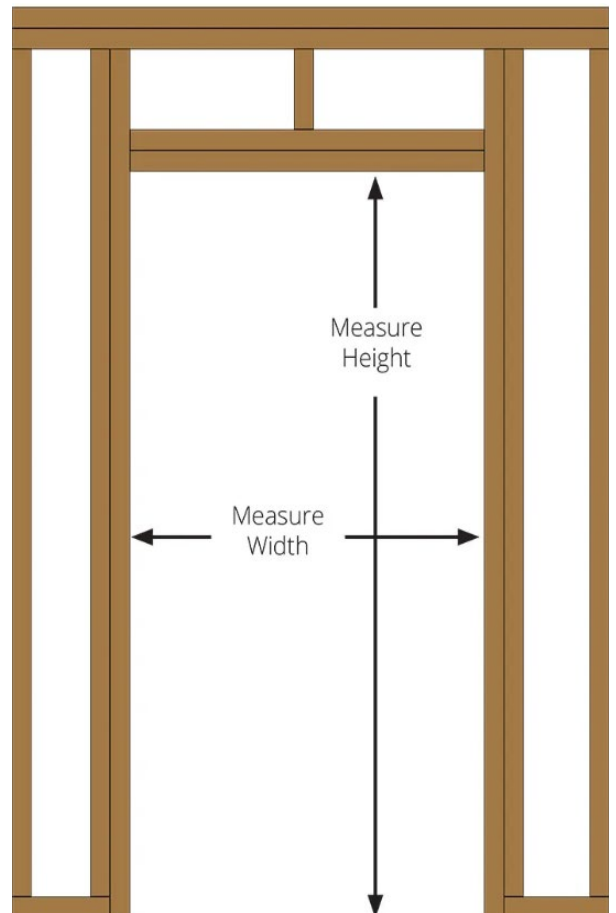
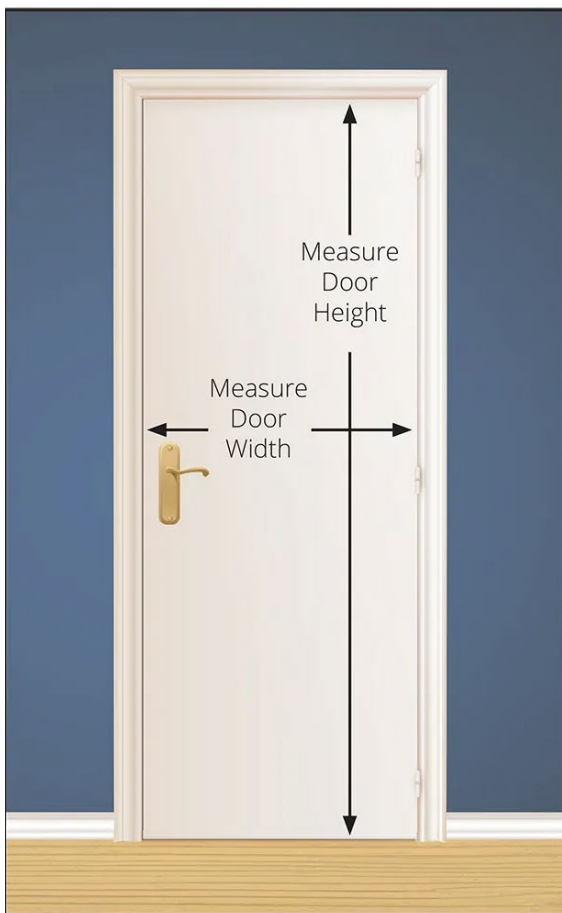
---

# Rough Opening

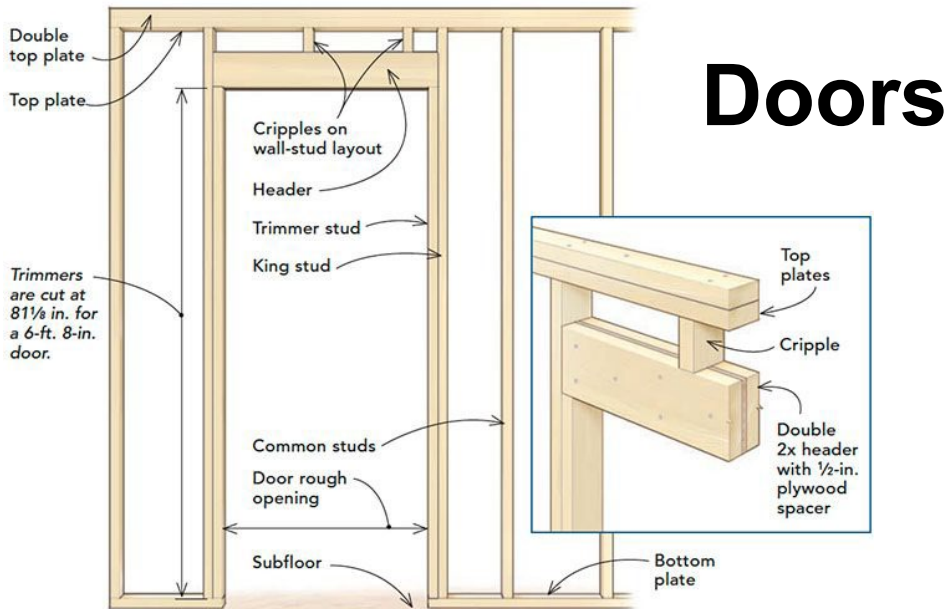
## What is a Rough Opening?

A rough opening refers to a framed opening for your planned door or window. It has a header across the top, a sill plate/threshold across the bottom, and vertical trimmers on either side.

*\*Notice: Diagram below shows the difference between measurements of the door slab viewed on the left vs the actual rough opening viewed on the right.*

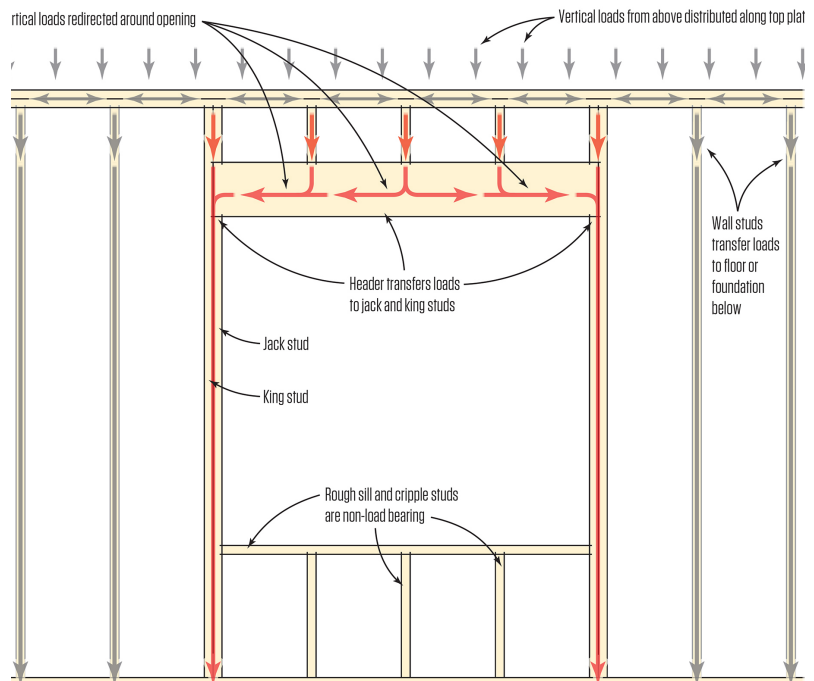


# Diagrams



Load Path at Rough Openings

## Windows



# Measuring for Doors

## Tools Required:

- ✓ Measuring Tape
- ✓ Step Stool (Optional)



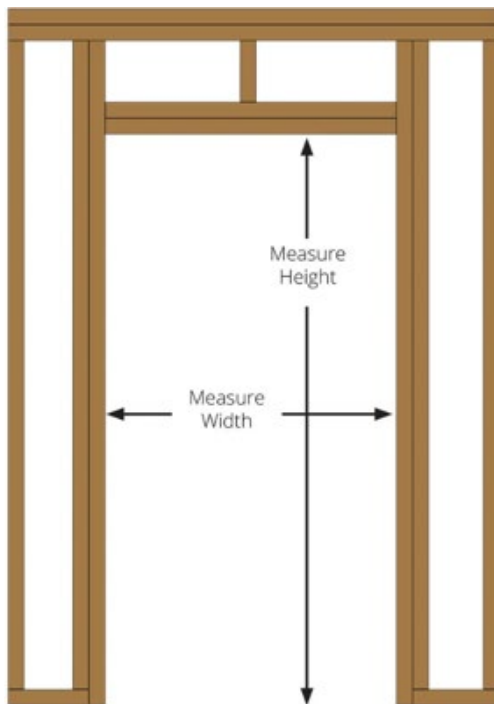
# Measuring for Replacement Outswing Doors

- ✓ ALL Mobile Home door sizes are based on their ROUGH OPENING SIZE . If you were to remove your existing door, the opening in the wall is the ROUGH OPENING. That is the measurement you need!
- ✓ **DO NOT** measure the outer metal flange of the door as it won't be fitting into the rough opening.
- ✓ Remove any interior trim from around the door, exposing the wood studwork and doorframe. Measure the entire opening from inside the home. This is a stud-to-stud measurement from left to right, and a “sill-to-header” measurement from top to bottom.
- ✓ NOTE: The most common mistake when measuring a Mobile Home door is measuring the door slab itself — this will result in an incorrect size. You must measure the rough opening as described above.



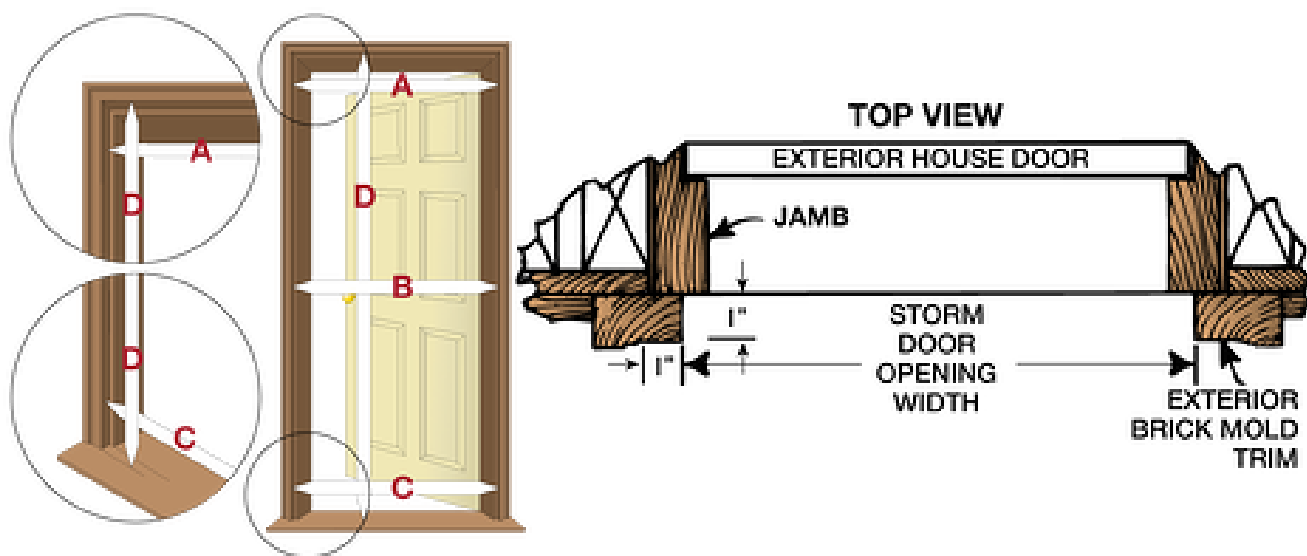
# Measuring for Replacement Inswing Doors

- ✓ ALL Mobile Home door sizes are based on their ROUGH OPENING SIZE . If you were to remove your existing door, the opening in the wall is the ROUGH OPENING. That is the measurement you need!
- ✓ Remove any interior trim from around the door, exposing the wood studwork and doorframe. Measure the entire opening from inside the home. This is a stud-to-stud measurement from left to right, and a “sill-to-header” measurement from top to bottom.
- ✓ Be sure to measure the depth of the door jamb as well
- ✓ NOTE: The most common mistake when measuring a Mobile Home door is measuring the door slab itself — this will result in an incorrect size. You must measure the rough opening as described above.



# Measuring for Replacement Storm Doors

- ✓ The storm door will be attached and mounted to the brickmould of the inswing mobile home door.
- ✓ For the width, measure from left to right inside the brick mold where the storm door mounting rails will be installed
- ✓ Measure in three places, top, middle and bottom (A,B,C). Provide the narrowest of the three measurements.
- ✓ For the height, measure from the threshold where the storm door will sit on the top (D).
- ✓ We are a proud supplier of Larson Storm Doors. See their [handy measurement video here](#).



# Windows

## Tools Required:

- ✓ Measuring Tape
- ✓ Step Stool (Optional)



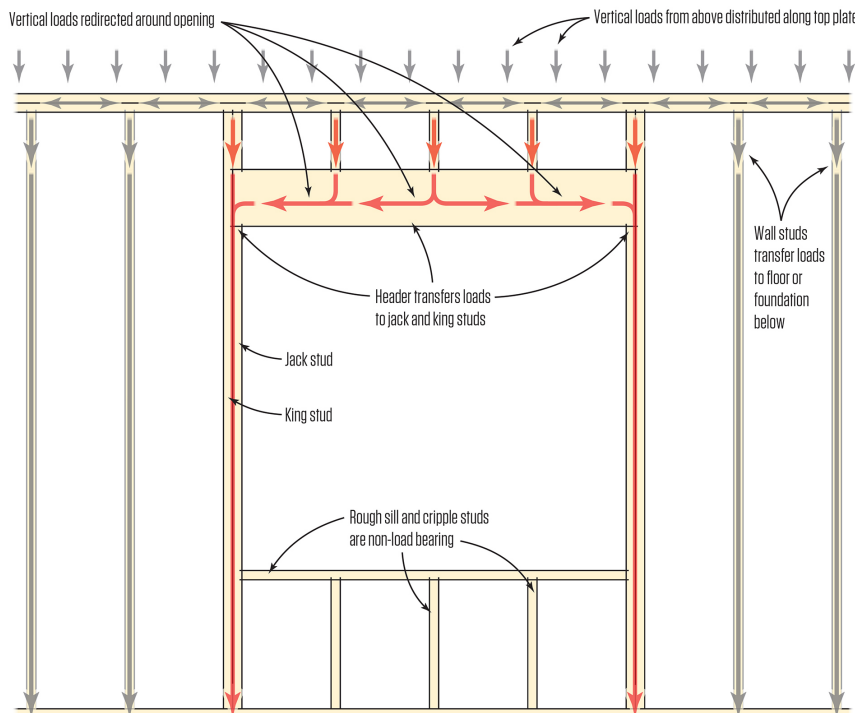


# Windows

## IMPORTANT: Before you begin

- ✓ ALL of our Mobile Home Window sizes are based on their ROUGH OPENING SIZE. If you were to remove your existing window, the opening in the wall is the ROUGH OPENING. That is the measurement you need!
- ✓ Remove any interior trim from around the window, exposing the wood studwork and frame. Measure the entire opening from inside the home. This is a stud-to-stud measurement from left to right, and a “sill-to-header” measurement from top to bottom.
- ✓ NOTE: Please view the diagram below. The correct way to measure is edge to edge collecting the closest measurements of the opening remaining when the window is removed.

Load Path at Rough Openings



# Contact Us

- ✓ We're happy to answer any questions you might have and help you choose the right product for your home.
- ✓ Our Customer Care team is available **Monday through Friday** from **9 a.m. to 5 p.m.** Mountain Time. Here are a few different ways you can connect with us:
  - ✓ **Phone:** [888-646-7782](tel:888-646-7782)
  - ✓ **Email:** [customercare@mobilehomeoutfitters.com](mailto:customercare@mobilehomeoutfitters.com)
  - ✓ **Website:** <https://mobilehomeoutfitters.com/>